



# Kiwicorn

Kat Merewether

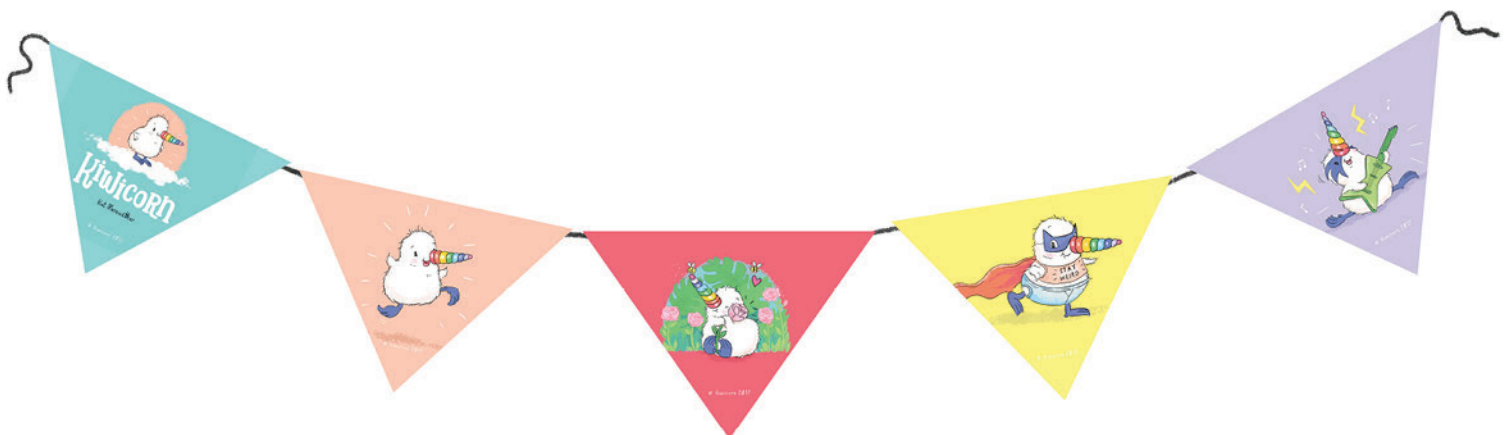
© Kiwicorn 2018



Cut along white dotted line. Place bunting flags back-to-back. Use a black or white ribbon to suspend, and staple the top of the flags to the ribbon.

© Kiwicorn 2018  
[www.kuwi.co.nz](http://www.kuwi.co.nz)

After stapling all bunting on, you can glue the bottom of the two back-to-back flags together.





© Kiwicorn 2018

© Kiwicorn 2018  
[www.kuwi.co.nz](http://www.kuwi.co.nz)

© Kiwicorn 2018

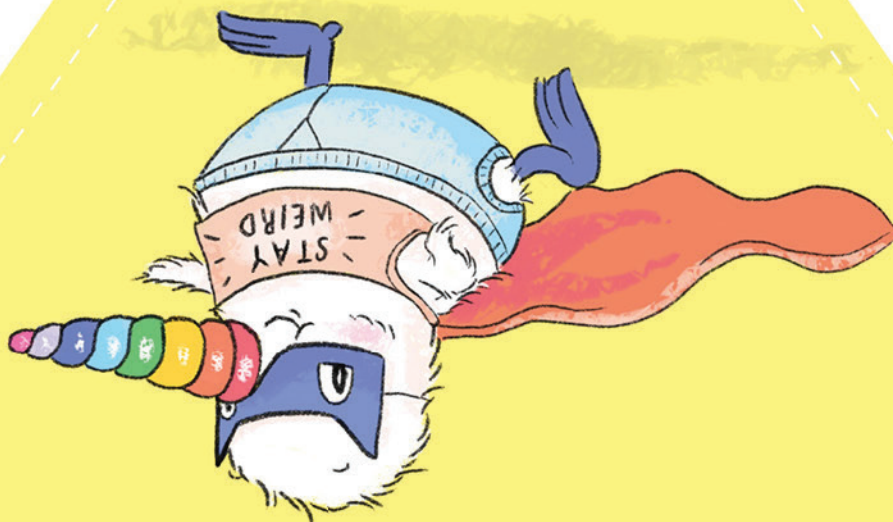




© Kiwicorn 2018

© Kiwicorn 2018  
[www.kuwi.co.nz](http://www.kuwi.co.nz)

© Kiwicorn 2018





© Kiwicorn 2018

© Kiwicorn 2018  
[www.kuwi.co.nz](http://www.kuwi.co.nz)

© Kiwicorn 2018







© Kiwicorn 2018

© Kiwicorn 2018  
[www.kuwi.co.nz](http://www.kuwi.co.nz)

© Kiwicorn 2018

